



## Strengths

-  Tolerance 0~+3%
-  High Transmission, low Iron Tempered Glass
-  Plug&Play Connectors
-  Bypass Diodes Protection
-  Salt Mist Test And Ammonia Resistance Test

## Warranty

-  Manufacturing 12 Years
-  Power Production  
95%: 5 years 90%: 12years  
85%: 18years 80%: 25years

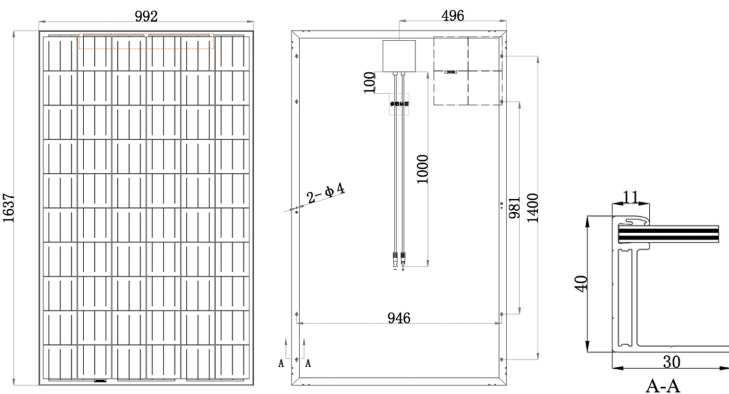
## Insurance

-  Insured By CHUBB

## Certificates

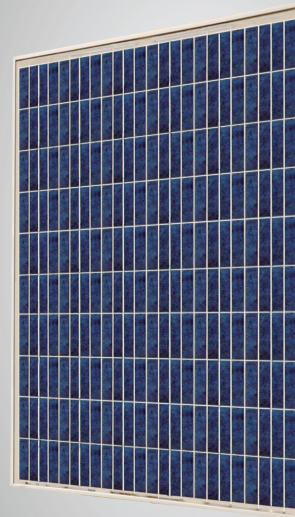


## PHYSICAL CHARACTERISTICS unit:mm



## SR MODULE

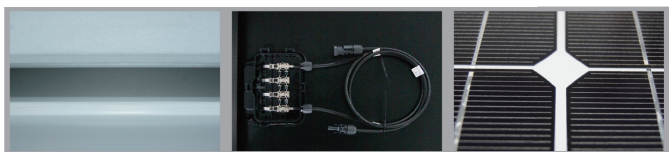
-  SR-P660255
-  SR-P660250
-  SR-P660245
-  SR-P660240



|                  |      |                |
|------------------|------|----------------|
| Dimensions       | (mm) | 1637×992×40    |
| Weight           | (kg) | 19.2           |
| Loading Capacity |      | 288 pcs/20' GP |
|                  |      | 728 pcs/40' HC |

Sunrise Solartech Co.,Ltd.

No.20 Tongzi River West Road,Zhonglou Development Zone ,  
Changzhou 213023 Jiangsu P.R.china.  
Tel:+86(519)8390 6510  
Fax:+86(519)8390 6508  
E-mail:info@srsolartech.cn  
Http://www.srsolartech.cn



# Specifications

| Module Type                              |        | SR-P660255                        | SR-P660250  | SR-P660245  | SR-P660240  |
|--|--------|-----------------------------------|-------------|-------------|-------------|
| Maximum Power                            | Pm(W)  | <b>255W</b>                       | <b>250W</b> | <b>245W</b> | <b>240W</b> |
| Tolerance                                | (%)    | 0~+3                              | 0~+3        | 0~+3        | 0~+3        |
| Open Circuit Voltage                     | Voc(V) | 37.49                             | 37.33       | 37.12       | 37.05       |
| Short Circuit Current                    | Isc(A) | 9.11                              | 8.96        | 8.78        | 8.63        |
| Maximum Power Voltage                    | Vm(V)  | 30.24                             | 30.11       | 29.99       | 29.89       |
| Maximum Power Current                    | Im(A)  | 8.44                              | 8.30        | 8.17        | 8.03        |
| Module Efficiency                        | (%)    | 15.70                             | 15.40       | 15.10       | 14.80       |
| Solar Cell Efficiency                    | (%)    | 17.72                             | 17.38       | 17.03       | 16.69       |
| Cell Type                                | (mm)   | 156×156(Poly-Crystalline Silicon) |             |             |             |
| Number of Cells                          | (Pcs)  | 60(6×10)                          |             |             |             |
| Number of diodes                         | (Pcs)  | 6                                 |             |             |             |
| Maximum System Voltage                   | (V)    | DC1000                            |             |             |             |
| Temp. Coeff.of Voc                       | (%/°C) | -0.33                             |             |             |             |
| Temp. Coeff.of Isc                       | (%/°C) | 0.055                             |             |             |             |
| Temp. Coeff.of Pm                        | (%/°C) | -0.44                             |             |             |             |
| Operating Temperature                    | (°C)   | -40 to 85                         |             |             |             |
| Nominal Operating Cell Temperature(NOCT) | (°C)   | 45±2                              |             |             |             |
| Max.Series Fuse                          | (A)    | 15                                |             |             |             |
| Wind Bearing                             | (Pa)   | 2400                              |             |             |             |
| Pressure Bearing                         | (Pa)   | 5400                              |             |             |             |

STC(Standard Test Conditions):1000W/m<sup>2</sup> AM=1.5 25°C

## Electrical Characteristics

|            |      | 1000<br>W/m <sup>2</sup> | 800<br>W/m <sup>2</sup> | 600<br>W/m <sup>2</sup> | 400<br>W/m <sup>2</sup> | 200<br>W/m <sup>2</sup> | 100<br>W/m <sup>2</sup> |
|------------|------|--------------------------|-------------------------|-------------------------|-------------------------|-------------------------|-------------------------|
| SR-P660255 | Vmpp | 30.24                    | 30.09                   | 29.79                   | 29.03                   | 28.12                   | 27.37                   |
|            | Impp | 8.44                     | 6.20                    | 4.65                    | 3.19                    | 1.65                    | 0.86                    |
| SR-P660250 | Vmpp | 30.11                    | 29.96                   | 29.66                   | 28.91                   | 28.01                   | 27.00                   |
|            | Impp | 8.30                     | 6.12                    | 4.62                    | 3.17                    | 1.64                    | 0.84                    |
| SR-P660245 | Vmpp | 29.99                    | 29.84                   | 29.54                   | 28.79                   | 27.89                   | 27.14                   |
|            | Impp | 8.17                     | 6.01                    | 4.53                    | 3.10                    | 1.59                    | 0.81                    |
| SR-P660240 | Vmpp | 29.89                    | 29.74                   | 29.44                   | 28.69                   | 27.80                   | 27.05                   |
|            | Impp | 8.03                     | 5.90                    | 4.46                    | 3.04                    | 1.57                    | 0.79                    |

