



**DEEP CYCLE**  
**SERIES: 4000**  
**MODEL: S-290**

**BATTERY ENGINEERING**  
 WWW.ROLLSBATTERY.COM MADE IN CANADA

**BATTERY TYPE: 6 VOLTS**

**DIMENSIONS:**

**LENGTH** 259 MM 10 3/16 INCHES  
**WIDTH** 181 MM 7 1/8 INCHES  
**HEIGHT** 279 MM 11 INCHES

**WEIGHTS:**

**WEIGHT DRY** 27 KG 59 LBS.  
**WEIGHT WET** 31 KG 68 LBS.

**CONTAINER CONSTRUCTION:**

**CONTAINER:** POLYPROPYLENE

**TERMINALS:** DUAL POST

**COVER:** POLYPROPYLENE

**HANDLES:** NO HANDLES

**PLATES:**

**POSITIVE PLATE DIMENSION:**

**HEIGHT** 159 MM 6.250 INCHES  
**WIDTH** 159 MM 6.250 INCHES  
**THICKNESS** 2.79 MM 0.110 INCHES

**CELLS:** 3

**PLATES/CELL:** 19

**NEGATIVE PLATE DIMENSION:**

**HEIGHT** 159 MM 6.250 INCHES  
**WIDTH** 159 MM 6.250 INCHES  
**THICKNESS** 2.24 MM 0.088 INCHES

**SEPARATOR:**

**THICKNESS** 2 MM 0.061 INCHES

**INSULATION:**

**GLASS MAT** 1 MM 0.020 INCHES

**CAPACITY:**

**CRANK AMPS:**  
**COLD (CCA)** 0°F / -17.8°C 710  
**MARINE (MCA)** 32°F / 0°C 888

**ELECTROLYTE RESERVE:**

**ABOVE PLATES** 57 MM 2.25 INCHES

**RESERVE CAPACITY:**

**RC @ 25A** 315 MINUTES

**20 HR RATE: 220**

	<b>HOURLY RATE</b>	<b>SPECIFIC GRAVITY</b>	<b>CAP / AH</b>	<b>CURRENT / AMPS</b>
CAPACITY @	100 HOUR RATE	1.280 SP. GR.	293	2.93
CAPACITY @	72 HOUR RATE	1.280 SP. GR.	277	3.85
CAPACITY @	50 HOUR RATE	1.280 SP. GR.	262	5.24
CAPACITY @	24 HOUR RATE	1.280 SP. GR.	227	9.4
<b>CAPACITY @</b>	<b>20 HOUR RATE</b>	<b>1.280 SP. GR.</b>	<b>220</b>	<b>11.0</b>
CAPACITY @	15 HOUR RATE	1.280 SP. GR.	207	13.8
CAPACITY @	12 HOUR RATE	1.280 SP. GR.	196	16.3
CAPACITY @	10 HOUR RATE	1.280 SP. GR.	187	18.7
CAPACITY @	8 HOUR RATE	1.280 SP. GR.	176	22.0
CAPACITY @	6 HOUR RATE	1.280 SP. GR.	163	27.1
CAPACITY @	5 HOUR RATE	1.280 SP. GR.	154	31
CAPACITY @	4 HOUR RATE	1.280 SP. GR.	143	36
CAPACITY @	3 HOUR RATE	1.280 SP. GR.	130	43
CAPACITY @	2 HOUR RATE	1.280 SP. GR.	112	56
CAPACITY @	1 HOUR RATE	1.280 SP. GR.	79	79



1 STATION RD SPRINGHILL, NOVA SCOTIA CANADA B0M 1X0 1.800.681.9914

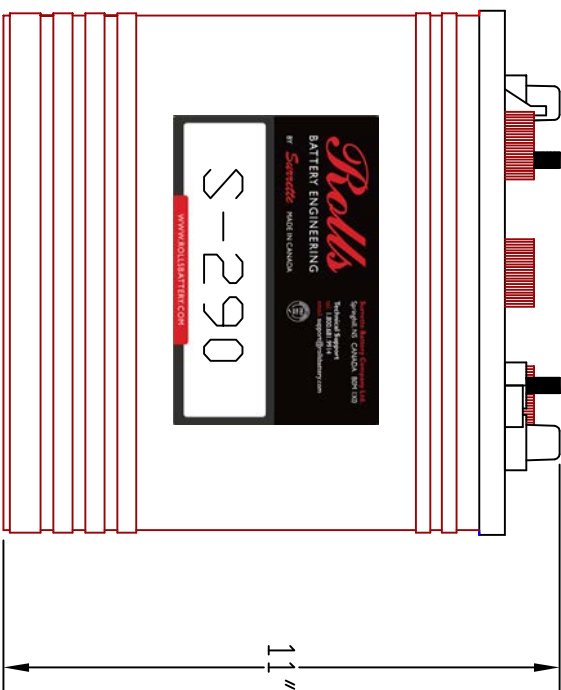
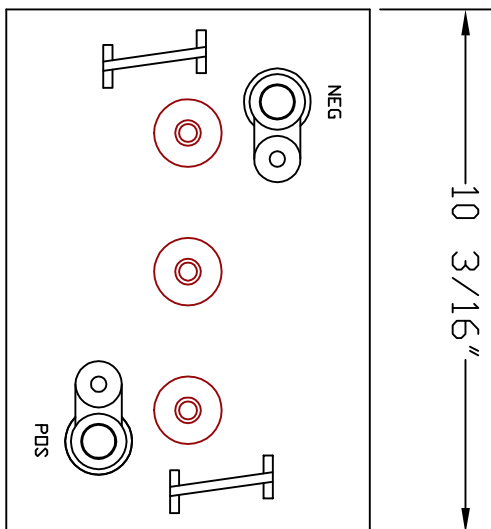
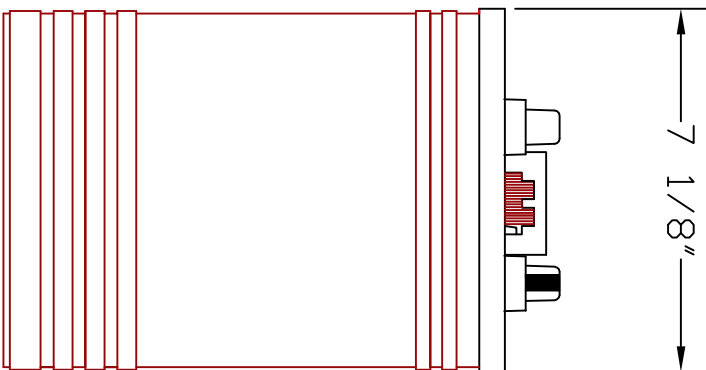
REV.2  
 May-13  
 S-290



SAI GLOBAL

ISO 9001

Quality



PART NUMBER: S-290

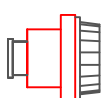
WEIGHT WET: 68 LB / 31 KG

WEIGHT DRY: 59 LB / 27 KG

CAPACITY 220 AH 20HR RATE

VOLTAGE: 6 V

OVERALL DIMENSIONS: 10 <sup>3</sup>/<sub>16</sub>" X 7 <sup>1</sup>/<sub>8</sub>" X 11"



MAX HEIGHT WITH OPTIONAL HYDRDCAPS 11 5/8"

**Rolls**  
BATTERY ENGINEERING

TITLE: S-290

DESCRIPTION: 6V DEEP CYCLE SERIES 4000

CONTACT INFO:

WEB: [WWW.ROLLSBATTERY.COM](http://WWW.ROLLSBATTERY.COM)  
E-MAIL: [SALES@ROLLSBATTERY.COM](mailto:SALES@ROLLSBATTERY.COM)  
PHONE: 1-800-681-9914

SCALE: 1" = 4" 8.5" X 11" JPEGI NOT TO SCALE

Drawn by: P. FERRON Approved By: JD SURRETTE

DATE: MAY-2013 REVISION 0

DRAWING NO.: S290.dwg